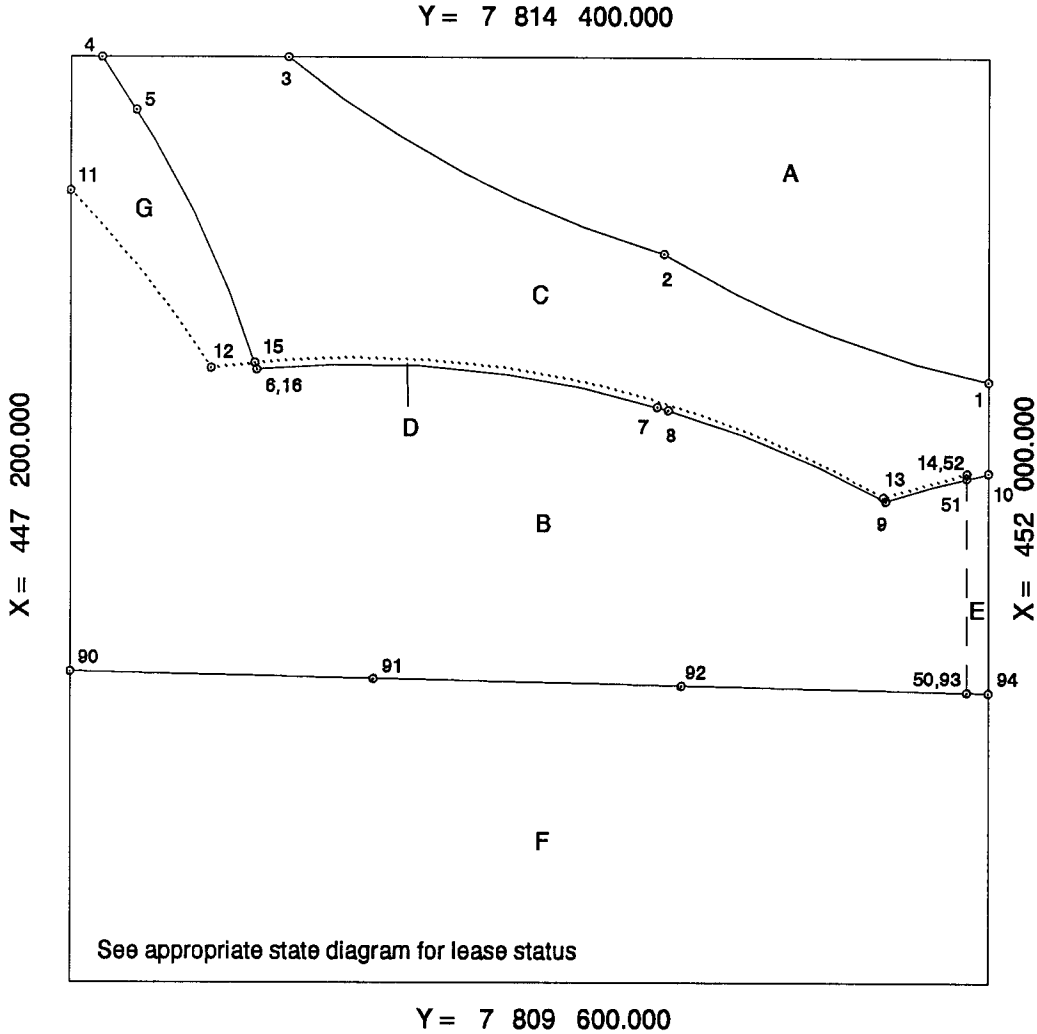


Composite Block Diagram

OCS Planning Area Name	Beaufort Sea	Leasing Map/ OPD Number	NR06-03
Leasing Map / OPD Name	Beechey Point	Block Number	6664
Submerged Lands Act Boundary Radius	5556.000	Datum	NAD 83/WGS 84
Other Boundary Radius	5556.000	Units	Meters
		Previous CBD Signature Date	09-OCT-1997



State Area	A =	353.730207	ha
	B =	715.788256	ha @
	E =	12.672510	ha
	F =	748.647468	ha
	G =	63.709972	ha
Federal 8(g) Area	C =	398.653395	ha
	D =	10.798192	ha @
Total Area		2304.000000	ha

Offshore Intersections			Contributing Baseline Points			Tangent Baseline End Points		
	X	Y		X	Y	X	Y	
1	452	000.000	7 812 721.042	1 - 2	453 144.937	7 818 157.792		
2	450	304.486	7 813 382.755	2 - 3	451 832.751	7 818 724.435		
3	448	344.428	7 814 400.000					
4	447	365.130	7 814 400.000	4 - 5	442 825.825	7 811 196.276		
5	447	547.359	7 814 124.801	5 - 6	442 881.466	7 811 108.415		
6	448	179.666	7 812 781.201	6 - 7	448 724.113	7 807 251.941		
7	450	269.652	7 812 588.648	* 7 - 8	448 724.113	7 807 251.941	*	448 782.085 7 807 235.152
8	450	327.624	7 812 571.859	8 - 9	448 782.085	7 807 235.152		
9	451	465.681	7 812 100.072	9 - 10	453 199.037	7 806 821.378		
10	452	000.000	7 812 246.454					
11	447	200.000	7 813 706.229	11 - 12	443 268.778	7 809 780.082		
12	447	940.209	7 812 788.395	12 - 13	448 713.413	7 807 286.272		
13	451	452.606	7 812 120.333	13 - 14	453 191.147	7 806 843.228		
14	451	887.359	7 812 244.209					
15	448	168.905	7 812 815.722	15 - 16	442 881.466	7 811 108.415		
16	448	179.666	7 812 781.201					

Composite Block Diagram

OCS Planning Area Name	Beaufort Sea	Leasing Map/ OPD Number	NR06-03
Leasing Map / OPD Name	Beechey Point	Block Number	6664

	Offshore Intersections				Contributing Baseline Points		Tangent Baseline End Points	
	X		Y		X	Y	X	Y
50	451	887.351	7	811	109.844			
51	451	887.351	7	812	220.324			
52	451	887.359	7	812	244.209			
90	447	200.000	7	811	213.423			
91	448	788.753	7	811	177.228			
92	450	397.132	7	811	141.704			
93	451	887.351	7	811	109.844			
94	452	000.000	7	811	107.435			

Teland Hornum

For the Director

MMS

06/06/2003

Date

For the State

Date